

**mscrm-addons.com**  
Your company for MS-CRM ADD-ONS!

# Integrate JSON data into your documents with DocumentsCorePack

Clint Higley, Michael Dohr

# DocumentsCorePack: Core document capabilities



## 1. Design

- Microsoft Word based
- Map fields from Dataverse
- NEW** - Map fields from a JSON schema



## 2. Generate & Deliver

- Send via E-mail
- Send for E-signature
- Save to SharePoint
- Print,
- Run Flow,...



## 3. Automate

- DocumentsCorePack Connector
- NEW** - Supply JSON data via „Create Document“ actions

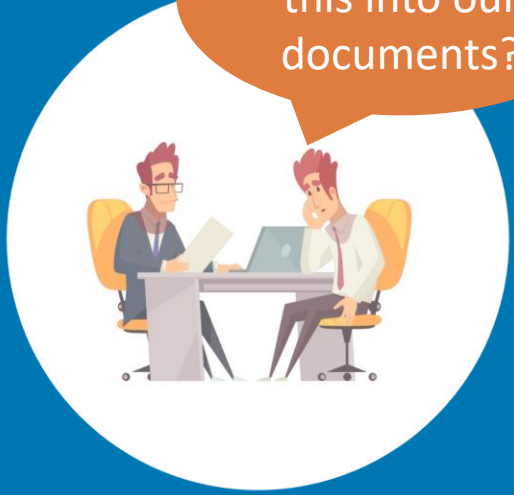


Dynamics 365 CE / Model Driven & Canvas Apps



Power Automate (Flows)

How to get this into our documents?



# WHAT is JSON?

- JSON stands for **J**ava**S**cript **O**bject **N**otation
- JSON is a format for storing and transporting data

**Example:** Power Automate Inputs and Outputs

Inputs:

- Table name: Email Messages
- Activity Parties: 

```
[{"participationtypemask": 1, "partyid@odata.bind": "/systemusers(42cda045-47b1-4852-9de6-1d...), {"participationtypemask": 2, "partyid@odata.bind": "/contacts(2d85e42d-0274-0011-8011-000000000000)"}]
```

Outputs:

```
CreateEmailMessage
CreateEmailMessage
{
  "statusCode": 201,
  "headers": {
    "x-ms-service-request-id": "117ae30a-43fc-494b-b2b1-9c88afd6496f,e974a314-4cbb-4ed7-ac56-008353200921",
    "Cache-Control": "no-cache",
    "Set-Cookie": "ARRAffinity=4b9ab3c8eff306c136425819eacdd0a4f5c2a2e537b850c",
    "Strict-Transport-Security": "max-age=31536000; includeSubDomains",
    "REQ_ID": "e974a314-6cbb-4ed7-ac56-008353200921",
    "AuthActivityId": "0ff85ce5-f2b9-406e-a09e-830bf8d14e27",
    "x-ms-dop-hint": "24",
    "x-ms-ratelimit-time-remaining-xrm-requests": "1,200.00",
    "x-ms-ratelimit-burst-remaining-xrm-requests": "5999",
    "Preference-Applied": "return=representation,odata.include-annotations=*",
    "OData-Version": "4.0",
    "X-Source": "1071372756152219209891320016940110103207526016915917315416130",
    "Public": "OPTIONS,GET,HEAD,POST",
    "Date": "Fri, 09 Jun 2023 11:43:25 GMT",
    "Content-Length": "130382",
    "Allow": "OPTIONS,GET,HEAD,POST",
    "Content-Type": "application/json; odata.metadata=full",
    "Expires": "-1"
  },
  "body": {
    "@odata.context": "https://restdemo20.crm4.dynamics.com/api/data/v9.1/$met",
    "@odata.type": "#Microsoft.Dynamics.CRM.email",
    "@odata.id": "https://restdemo20.crm4.dynamics.com/api/data/v9.1/emails(6661fa5d1-ba06-ee11-8f6e-6045bd8c56f5)",
    "@odata.etag": "W/\"101769299\"",
    "@odata.editLink": "emails(661fa5d1-ba06-ee11-8f6e-6045bd8c56f5)",
    "notifications@OData.Community.Display.V1.FormattedValue": "None",
    "notifications": 0,
    "isunsafe@OData.Community.Display.V1.FormattedValue": "0",
    "isunsafe": 0,
    "_regardingobjectid_value@OData.Community.Display.V1.FormattedValue": "Add",
    "_regardingobjectid_value@Microsoft.Dynamics.CRM.associatednavigationprop",
    "_regardingobjectid_value@Microsoft.Dynamics.CRM.lookuplogicalname": "quot",
    "_regardingobjectid_value@odata.type": "#Guid",
    "_regardingobjectid_value": "690674c8-ba06-ee11-8f6e-6045bd8c56ea",
    "statusCode@OData.Community.Display.V1.FormattedValue": "Draft",
    "statusCode": 1,
    "correlationmethod@OData.Community.Display.V1.FormattedValue": "None",
    "correlationmethod": 0,
    "activitytypecode@OData.Community.Display.V1.FormattedValue": "Email",
    "activitytypecode": "email",
    "isemailfollowed@OData.Community.Display.V1.FormattedValue": "No",
    "isemailfollowed": 0
  }
}
```

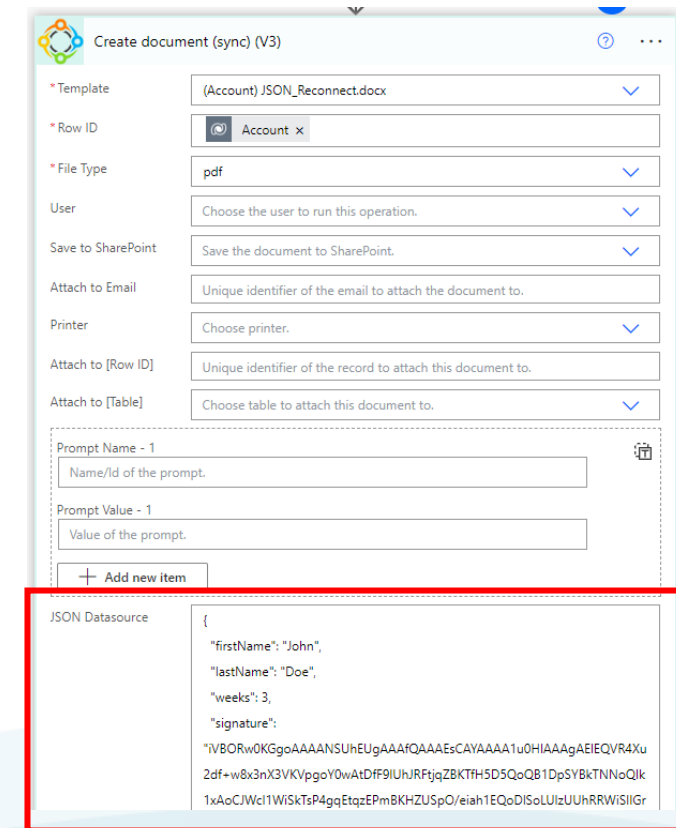
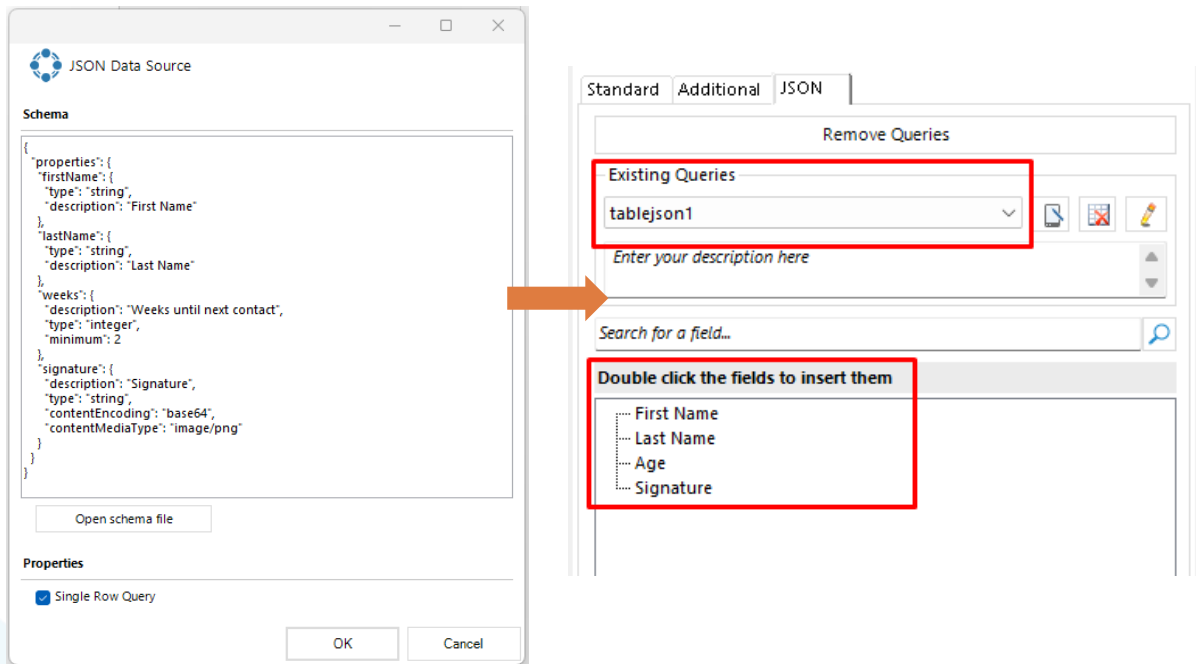
## Why?

- Add data outside Dataverse & Dynamics 365 to your document
- Power Automate allows to access and COMPOSE JSON from MANY sources

# JSON Support in DocumentsCorePack

1. Prepare your template:  
Specify JSON Scheme and map fields

2. Supply JSON data:  
Prepare and add data in JSON format



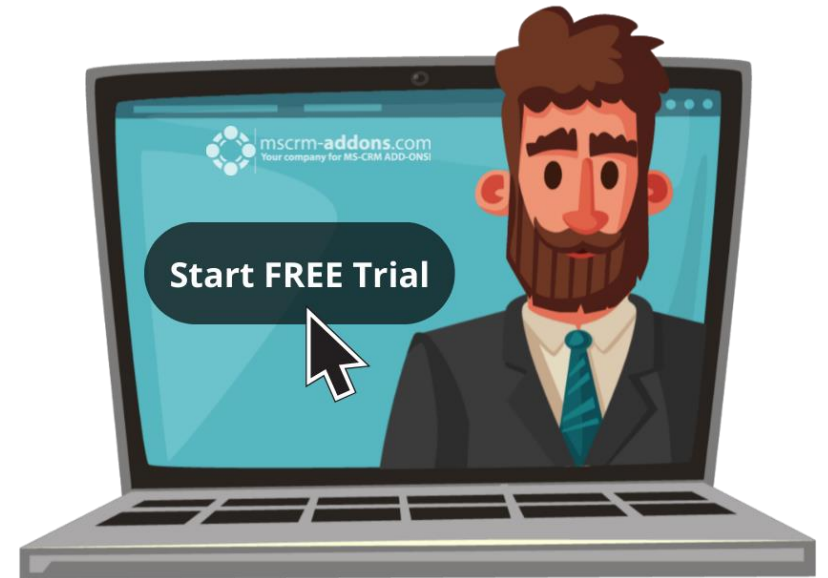


## Live Demo: Dinner Registration App

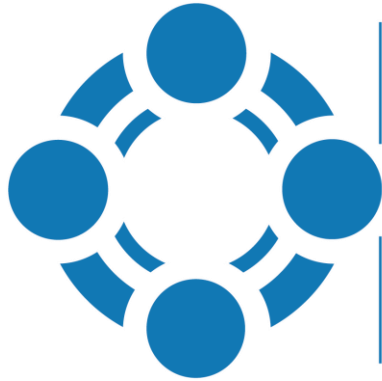
- The Use case explained
- How to prepare a template to accept JSON
- How to submit JSON to your document

# Free Trial

- **Free Trials Available** for all Add-Ons
- No functional limitations
- Fully supported
- ~30 minutes to get started



Available on  
**Microsoft AppSource**



**mscrm-addons.com**  
Your company for MS-CRM ADD-ONS!

# Thank you!



[www.mscrm-addons.com](http://www.mscrm-addons.com)



[info@mscrm-addons.com](mailto:info@mscrm-addons.com)



[support.mscrm-addons.com](http://support.mscrm-addons.com)



EMEA: +43 316 680 880



[Youtube Channel \(How To's, Webinars\)](#)

U.S.: +1 404 720 6066